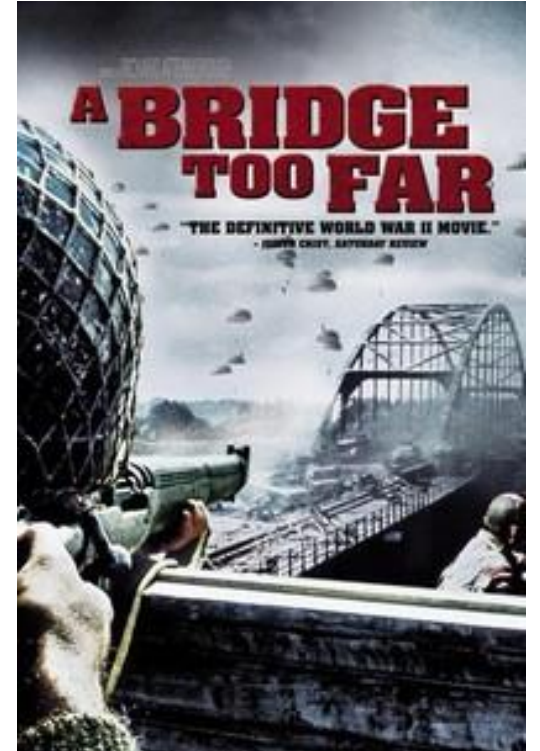


# Bidding to Slam

How not to bid “A Bridge Too Far”



# Main Idea

- You and partner have lots of points and (usually) a suit in mind
- You certainly have game, but how about slam?
  - Small slam: 6-level contract, 12 tricks
    - Need about 32 points (in no-trump)
  - Grand slam: 7-level contract, 13 tricks
    - Need about 37 points (in no-trump)
- **Use 4NT as a conventional bid to investigate**

# 1430 Roman Key Card



- Ask about “key cards”
  - “Key Cards”: aces plus the king of trump (agreed upon suit, or last bid suit)
- After Partner bids 4NT, responses are for number of key cards
  - 5♣: 1 or 4 keycards (“14-”)
  - 5♦: 3 or 0 keycards (“-30”)
  - 5♥: 2 (or 5) keycards, no trump queen
  - 5♠: 2 (or 5) keycards, plus trump queen
- Ex: ♥ trump, Partner bids 4NT, what do you say?



5♠: 2 keycards (♥A, ♣A) + queen of trump (♥)

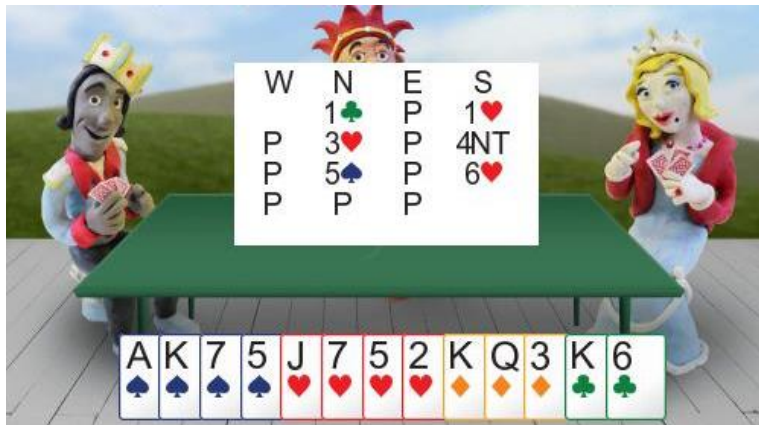


5♣: 1 keycard (♥K)

# 1430 Roman Key Card

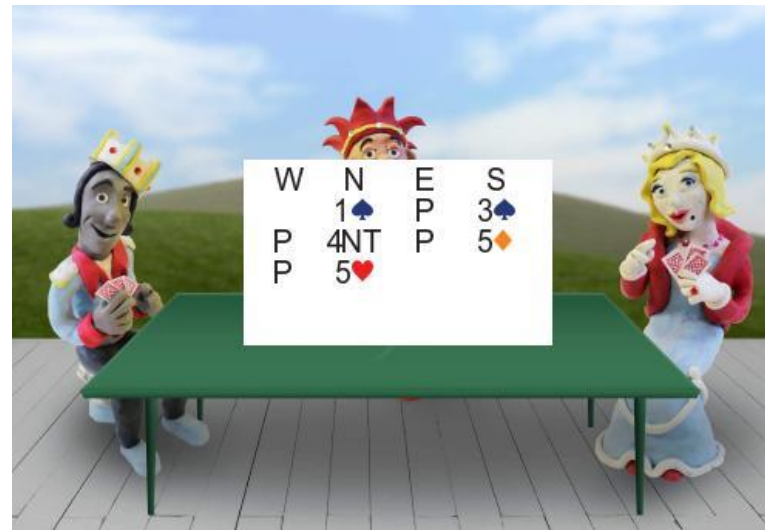
- Partner can rebid trump suit (to play) at any level or...
  - Bid below trump suit at 5 level: ask for queen of trump
    - Ex: (hearts are trump) 4NT – (P) – 5♣\* – (P) – 5♦\*\* – (P) – ...
      - \*1 or 4 keycards
      - \*\*Queen?
    - 5♥: no queen (signoff)
    - 5♠: yes queen, plus king of spades (6♣, 6♦ same idea)
    - 5NT: yes queen, no other kings
  - Bid 5NT: ask for specific kings
    - Bid 6♣ with ♣K, bid 6♦ with ♦K and NO ♣K
    - Don't go past 6-level of trump suit
      - Ex: with ♠K and no ♣K or ♦K, just bid 6♥ (denying lower kings)

# Some Examples



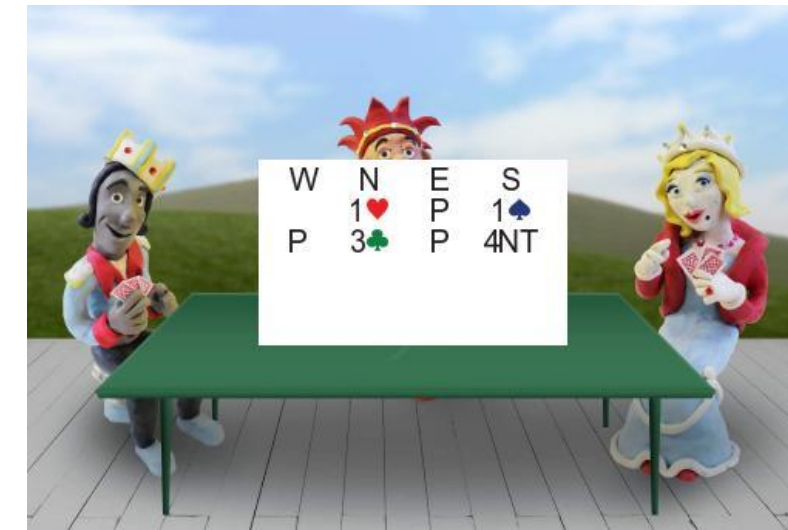
What does 5♠ mean?  
 What if 5♥ was bid instead? What is your next bid?

5♠: 2 keycards + queen of trump (♥)  
 5♥: 2 keycards, no queen of trump (♥).  
 Next bid will be Pass – best to simply play at 5♥ missing one ace and ♥Q (plus, only an 8-card fit)



What does 5♦ mean?  
 What does 5♥ mean?

5♦: 0 or 3 keycards  
 5♥: asking for the queen of trump (♠).  
 If next bid is 5♠, Partner does not have ♠Q. Else, Partner has ♠Q and king in bid suit (i.e., 6♣ → ♣K). 5NT denies any extra non-spade kings.



What is the trump suit?

Trump suit is ♣ - last naturally bid suit if no agreement.

# 4NT Quantitative

- Bid of 4NT after NT opening (1NT, 2NT, or 2♣ – 2♦ – 2NT)
  - As long as a suit has not been bid naturally, 4NT quantitative is on over NT openers!
- Idea: bid 6NT with 32 combined points, pass with fewer
- 1NT opening promises 15-17 HCP
  - Responder bids 4NT with 15-16 HCP
  - Opener raises to 5NT with 16 HCP – Responder bids 6NT with 16 HCP, too
  - Opener raises to 6NT with 17 HCP
- Similar idea with 2NT opening (20-21 HCP) or 2♣ – 2♦ – 2NT (22-24 HCP)

# Gerber



- Bid of 4♣ after NT opening (1NT, 2NT, or 2♣ – 2♦ – 2NT)
  - As long as a suit has not been bid naturally, 4♣ Gerber is on over NT openers!
- Asks for specific number of aces:
  - 4♦: 0 or 4 aces
  - 4♥: 1 ace
  - 4♠: 2 aces
  - 4NT: 3 aces
- Rebid of 5♣ asks for number of kings (same rule: 0 or 4, 1, 2, 3)
- Ex: Partner bids 4♣ Gerber, what do you bid?



4NT: 3 aces